

"MFIL" - in-line centrifugal fans



- **Centrifugal fans for domestic or commercial use**
- **6 models**
- **4 sizes**
- **2 timer models**
- **5 models with 2 speed motor**
- **1 models with 3 speed motor**
- **IPX4 - Splashproof**
- **Exceeds Building Regulations requirements**

GENERAL

- centrifugal in-line fans for domestic or commercial use
- easy to install and maintain - fan can be accessed without removing ducting
- can be used with flexible or rigid ducting
- high performance extract capacities and pressures
- two and three speed motors on fans allow for selection of required speed on installation
- MFIL150 and MFIL200 can be used with speed controller
- low noise levels
- suitable for continuous running
- timer adjustable from 3-15 minutes
- **IPX4 - Splashproof** - can safely be installed in Zones I and II

SPECIFICATION

- made of shock proof and heat resistant plastics
- double insulated motors of shaded pole type on self-lubricating, sealed ball bearings for long life
- motor windings protected to Class B
- motors incorporate thermal cut-out
- external terminal box
- maximum ambient temperature 40°C

COMPLY WITH

- The Ecodesign for Energy-Related Products and Energy Information (Amendment) EU Exit Regulations 2019.
- The Restriction of the Use of Certain Hazardous Substances in Electrical and Electronic Equipment Regulations 2012;
- Electromagnetic Compatibility Regulations 2016
- Electrical Equipment (Safety) Regulations 2016
- UKCA and CE marked

TYPICAL SPECIFICATION

Supply and install a Vectaire MFIL125T in-line centrifugal fan suitable for either domestic or commercial use as supplied by Vectaire Ltd, Lincoln Road, Cressex Business Park, High Wycombe, Bucks, HP12 3RH.

The fan should have be capable of being ducted over long lengths of either rigid or flexible ducting and should have an over-run timer, which is adjustable from between 3 and 15 minutes.

The fan should be made of shockproof and heat resistant plastic, contain a two-speed motor with sealed, self-lubricating bearings, and be protected with a thermal cut-out. It should be possible for the installer to select the desired operating speed when fitting.

The fan should be double insulated, be splashproof to IPX4 making it suitable for installation into Zones I and II and comply with all current IEE, EC and Building Regulations requirements.

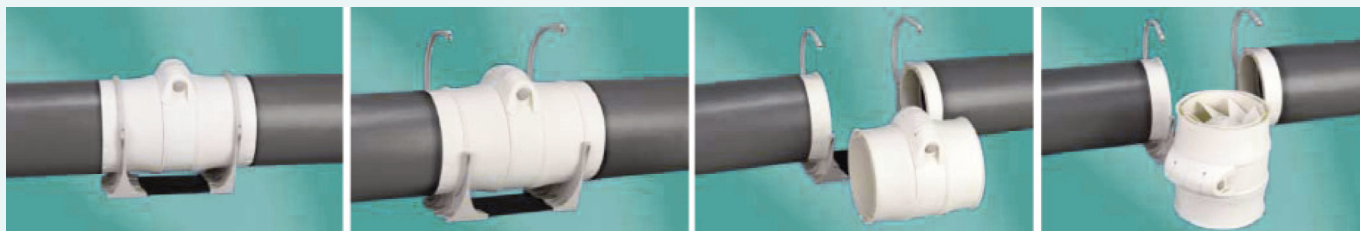
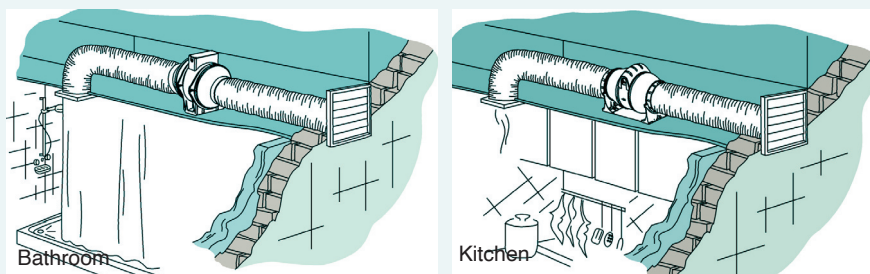
RANGE

- **MFIL100-Plus** - with 2-speed motor
- **MFIL100T-Plus** - with timer and 2-speed motor
- **MFIL125** - with 2-speed motor
- **MFIL125T** - with timer and 2-speed motor
- **MFIL150** - with 2-speed motor
- **MFIL200** - with 3-speed motor

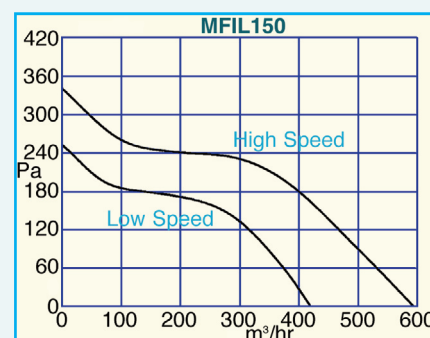
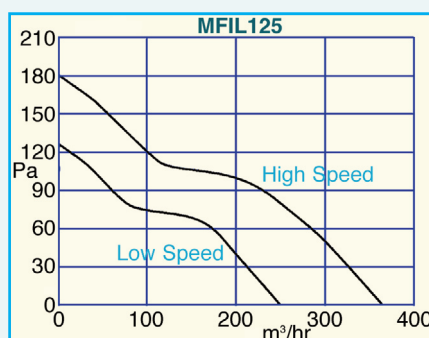
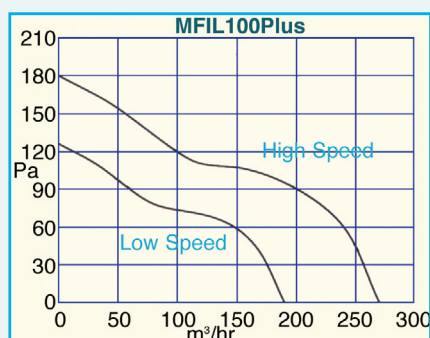


TECHNICAL CHARACTERISTICS

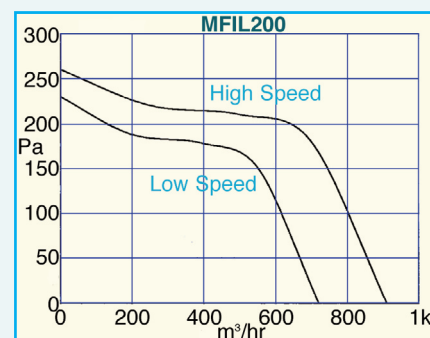
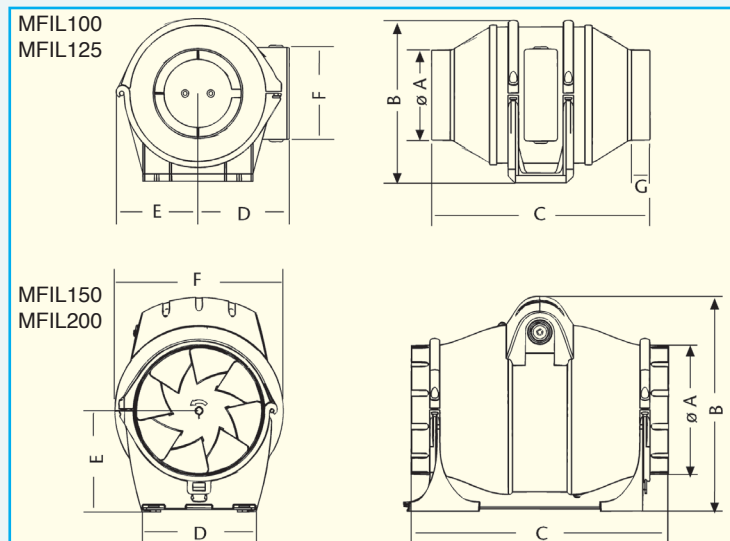
INSTALLATION



PRESSURE CURVES



DIMENSIONS



	øA	B	C	D	E	F	G
MFIL100+	98	217	262.4	100	100	168.3	21.3
MFIL125	122	217	262.4	100	100	168.3	21.3
MFIL150	147	244	293.4	130	115	192.3	21.3
MFIL200	197	278.5	353.6	142	140	230.2	51.5

TECHNICAL DATA

Model	m³/hr	litres/sec	Max mmH ₂ O	Max Pa	Volts	Hz	Max Amps	Watts	dbA	Hole dia mm	Weight kg
MFIL100Plus/T	190/270	53/75	18	177	230	50/60	0.10/0.16	18/30	24/30	100	2.1
MFIL125/T	250/365	69/101	18	177	230	50/60	0.10/0.16	18/30	26/32	125	2.1
MFIL150	420/595	117/165	34	334	230	50/60	0.27/0.36	60/80	27/33	150	3.2
MFIL200	720/820/910	200/228/253	27	265	230	50/60	.24/.27/.34	55/65/85	32/34/39	200	4.5

FULL RANGE OF ACCESSORIES AVAILABLE INCLUDING FLEXIBLE AND FLAT DUCTING

Tel: +44(0)1494 522333
Fax: +44(0)1494 522337
MFIL0825©

Vectaire Ltd
Lincoln Road, Cressex Business Park
High Wycombe, Buckinghamshire, HP12 3RH

Email: sales@vectaire.co.uk
Web: www.vectaire.co.uk